

SPOTLIGHT ON...

Stockists

Rockwool products are available from the following SIG Insulations stockists.



Aberdeen Branch
Tel: 01224 825825 Fax: 01224 822892

Bedford Branch
Tel: 01234 761100 Fax: 01234 272157

Birmingham Branch
Tel: 0121 665 3050 Fax: 0121 665 3075

Blairstown Branch
Tel: 01250 873611 Fax: 01250 875252

Bristol Branch
Tel: 0117 931 3400 Fax: 0117 931 3411

Cardiff Branch
Tel: 0292 066 2900 Fax: 0292 066 2911

Eurocentral Branch
Tel: 01698 833755 Fax: 01698 733048

Inverness Branch
Tel: 01463 701200 Fax: 01463 701201

Leeds Branch
Tel: 0113 385 7700 Fax: 0113 385 7701

Leicester Branch
Tel: 0116 232 5019 Fax: 0116 232 5018

Liverpool Branch
Tel: 0151 547 7680 Fax: 0151 547 7681

London East Branch
Tel: 020 8477 9500 Fax: 020 8477 9501

London West Branch
Tel: 020 8839 4321 Fax: 020 8839 4301

Loughborough Branch
Tel: 01509 231891 Fax: 01509 232869

Manchester Branch
Tel: 0161 876 4776 Fax: 0161 876 4775

Newcastle Branch
Tel: 0191 226 3110 Fax: 0191 226 3111

Norwich Branch
Tel: 01603 765660 Fax: 01603 226000

Plymouth Branch
Tel: 01752 675400 Fax: 01752 675419

Sheffield Branch
Tel: 0114 241 3000 Fax: 0114 241 3001

Southampton Branch
Tel: 023 8074 0074 Fax: 023 8074 0122

Tonbridge Branch
Tel: 01732 370 500 Fax: 01732 370 530

www.sheffins.co.uk



Bridgwater Branch
Tel: 01278 686000 Fax: 01278 686006

Chesterfield Branch
Tel: 01246 450505 Fax: 01246 456156

Colchester Branch
Tel: 01206 214600 Fax: 01206 214610

Coventry Branch
Tel: 024 7664 4373 Fax: 024 7664 4588

Crewe Branch
Tel: 01270 530800 Fax: 01270 530830

Heathrow Branch
Tel: 01753 685131 Fax: 01753 681623

Leominster Branch
Tel: 015 6870 8975 Fax: 015 6870 9279

www.warren.co.uk



Bradford Branch
Tel: 01274 711470 Fax: 01274 711471

Bristol Branch
Tel: 0117 9160770 Fax: 0117 9381876

Burton-on-Trent Branch
Tel: 01283 517777 Fax: 01283 511200

Manchester Branch
Tel: 0161 793 1100 Fax: 0161 793 1155

Sheffield Branch
Tel: 0114 244 1420 Fax: 0114 242 3317

Sidcup Branch
Tel: 020 8308 6950 Fax: 020 8308 6951

Wycombe Branch
Tel: 01494 462001 Fax: 01494 462002

www.orientrent.co.uk



Aberdeen Branch
Tel: 01224 771566 Fax: 01224 770319

Bedford Branch
Tel: 01234 761490 Fax: 01234 761499

Birmingham Branch
Tel: 0121 665 3060 Fax: 0121 544 8026

Bristol Branch
Tel: 0117 931 3420 Fax: 0117 931 3425

Chesterfield Branch
Tel: 01246 269537 Fax: 01246 261725

Glasgow Branch
Tel: 0141 643 3600 Fax: 0141 641 2426

Heathrow Branch
Tel: 01753 687272 Fax: 01753 681623

Leeds Branch
Tel: 0113 385 7777 Fax: 0113 385 7778

Leicester Branch
Tel: 0116 232 5000 Fax: 0116 232 5001

London East Branch
Tel: 020 7473 9310 Fax: 020 7473 9311

London West Branch
Tel: 020 8839 4290 Fax: 020 8839 4295

Newcastle Branch
Tel: 0191 226 6730 Fax: 0191 226 6731

Newton-Le-Willows Branch
Tel: 01925 225252 Fax: 01925 229700

Norwich Branch
Tel: 01603 226020 Fax: 01603 226025

Plymouth Branch
Tel: 01752 675417 Fax: 01752 675418

Portsmouth Branch
Tel: 023 9269 6733 Fax: 023 9266 1406

Swansea Branch
Tel: 01792 588461 Fax: 01792 583849

www.kitsonsthermal.co.uk



Shobdon Branch
Tel: 01568 708888 Fax: 01568 708181

Wolverhampton Branch
Tel: 01902 733711 Fax: 01902 733722

www.woodsinsulation.co.uk



Southampton Branch
Tel: 023 8062 5550 Fax: 023 8062 5551

London Branch
Tel: 020 8556 4411 Fax: 020 8556 4472

www.solentinsulation.co.uk



Brighton Branch
Tel: 01273 878700 Fax: 01273 878704

Worthing Branch
Tel: 01903 218115 Fax: 01903 823298

www.franklinltd.co.uk



Peterborough Branch
Tel: 01733 202299 Fax: 01733 208401

www.chdwhittlesey.co.uk



Witney Branch
Tel: 01993 700993 Fax: 01993 708993

www.chinsulation.co.uk



Stirling Branch
Tel: 01786 849100 Fax: 01786 849940

www.clyde-insulation.co.uk



Basingstoke Branch
Tel: 01256 335401 Fax: 01256 335402

Bow Branch
Tel: 020 8985 9802 Fax: 020 8985 6175

Brentford Branch
Tel: 020 8232 8509 Fax: 020 8568 4059

www.sigexpress.co.uk

SIG INSULATIONS

www.siginsulations.co.uk

SIG INSULATIONS

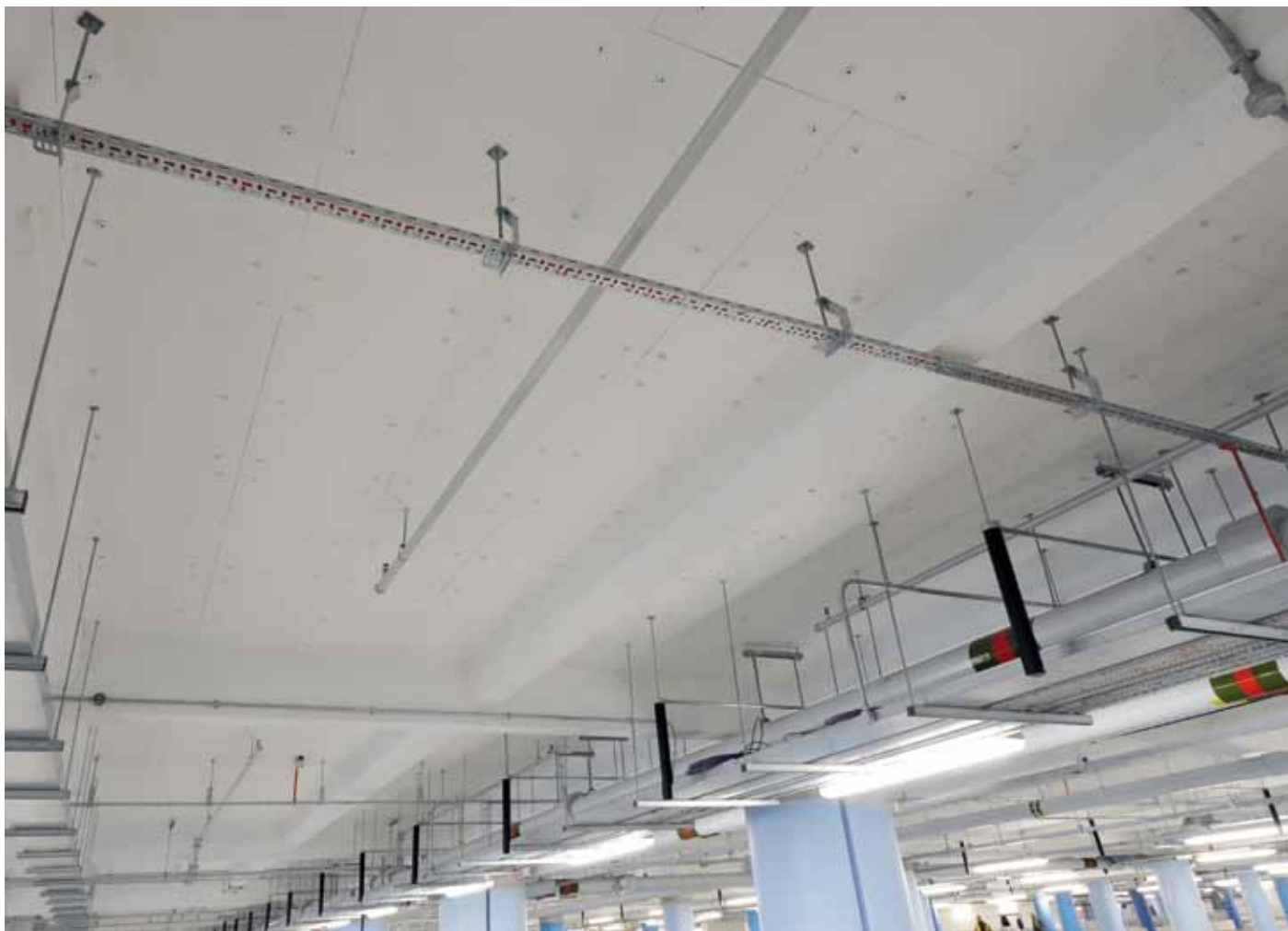
SPOTLIGHT ON... **ROCKWOOL®**

HI-IMPACT SOFFIT SLAB



Rockwool, the world's leading manufacturer of non-combustible stone wool insulation, has launched Hi-Impact soffit slab – a thermal and fire-rated solution for concrete soffits of exposed floors.

The new product, created in partnership with Promat, a market leader in passive fire protection, has been developed in response to demand from Rockwool's customers.



The introduction of the Hi-Impact soffit slab now means Rockwool has a complete solution providing outstanding thermal and fire protection of car parks, for both new builds and refurbishments.

Following demand from the market, Rockwool decided to team up with Promat and develop this soffit slab, which marries exceptional thermal and fire protection with flexibility of use.

Thermal Insulation

Hi-Impact soffit slab offers the non-combustibility and thermal properties of Rockwool stone-wool insulation combined with the impact resistant Promat PROMATECT® HD board. When fitted to a 150mm reinforced concrete soffit, 136mm thick Hi-Impact soffit slab allows specifiers to meet Part L regulations of 0.25 W/m²K. The more stringent requirement of 0.20 W/m²K can be achieved using 166mm of Hi-Impact Soffit Slab.

Fire Protection

Rockwool's Hi-Impact soffit slab is fully tested to BSEN 1363-1 standard and offers up to 4 hours insulation and integrity to a structural concrete soffit. The test was conducted by Exova Warringtonfire, and makes Hi-Impact soffit slab unique in being the only solution for concrete soffits that has been tested in-situ.

The Rockwool stone-wool insulation and the Promat PROMATECT® HD board that make up Hi-Impact soffit slab are both non-combustible and have A1 classification for reaction to fire and the surface spread of flame.

This makes the product ideal for lining concrete soffits in car-parks; not only for new-build but also refurbishment and renovation projects.

Finishes

Hi-Impact soffit slab uses the rigidity of PROMATECT® HD board to offer a durable and impact resistant surface to stone-wool insulation which can be decorated to suit colour schemes.

Rockwool soffit slab is also available as un-faced, with black or white tissue facing or aluminium foil facing.

Ease of installation

Hi-Impact Soffit Slab is fixed directly to the surface of the soffit. The stone wool core allows the slab to be fixed to uneven surfaces of soffits without creating air-gaps which may affect thermal performance, while maintaining the aesthetic line and level of the ceiling.

Recyclable

The stone-wool insulation used in Hi-Impact soffit slab is recyclable. Furthermore, it typically has a recycled content in excess of 50% - including recycled stone-wool as well as waste from other industries.

Hi-Impact soffit slab is part of Rockwool's fire protection and fire stopping range. This range includes Beamclad – for fire protection of structural steel, as well as Ablative Coated batt – for fire stopping service penetrations. All Rockwool's fire protection and fire stopping range are independently tested.

About Rockwool

Rockwool is the world's largest producer of stone wool insulation and the second largest insulation producer globally. The group has annual sales of Euro 1.8 billion and employs over 8,500 staff in more than 30 countries. It has 22 factories around the world including Pencoed, near Bridgend, South Wales.

Rockwool insulation is created from naturally occurring volcanic diabase rock with the ore smelted and spun into fibres to create a wide range of insulation materials, ranging from loft insulation rolls to impact-resistant roofing boards. It is also bonded to produce high performance panels.

Rockwool provides a four-in-one insulation solution, providing high grade thermal insulation, noise insulation, non-combustible and strong environmental credentials. This year alone, the insulation products produced by Rockwool will save more than 200 million tonnes of CO₂. Rockwool insulation is also recyclable and can be re-smelted and spun into new stone wool insulation rolls and panels.

Rockwool was founded in 1937 in Denmark, its largest shareholder is The Rockwool Foundation.

ABOUT SIG INSULATIONS

SIG Insulations is the UK's market leading specialist distributor of insulation, dry lining and related products to construction and industry, comprising 21 companies and serving a wide range of industries and specialist markets.

Our businesses are engaged in the following areas, offering customers a service that fully integrates products, solutions and technical support.

- Insulation materials for thermal, acoustic and fire protection
- Timber frame insulation
- High temperature insulation
- Dry lining and plasterboards
- Fire protection boards
- House building materials
- Sustainable/renewable technologies
- Building products
- Industrial insulation
- Plumbing, heating and ventilating
- Marine and power

- Oil and gas processing
- Chemical and pharmaceutical
- Food chain process and manufacture
- Cold storage
- Asbestos removal
- Specialist cladding
- Specialist fabrication
- Chimneys, dormers & canopies
- Engineering maintenance
- Tools and ancillaries

This publication contains manufacturers' product information, the views expressed are not necessarily those held by SIG Insulations. Whilst every effort has been made to ensure that the information is current and correct, as distributors SIG Insulations cannot accept responsibility for the application and performance levels of the products featured. Neither can we accept responsibility where the manufacturers' instructions have not been followed.

